



Precautions

Normal Operation: The green LED indicator stays on when connected to mains supply. The indicator will turn off when the mains supply fails, or when the internal charger malfunctions, or when the luminaire is in test mode.

Battery: LiFePO4 rechargeable battery pack. Battery should be replaced when it reaches the end of its lifetime. To avoid damage to the luminaire and ensure its performance, the battery should be replaced with same type.

Test Switch: Press the test button, LED indicator will turn off and the luminaire will be powered by the battery pack. The light source is non-replaceable. When the light source reaches the end of its lifetime, the whole luminaire shall be replaced.

Installation Procedure

WARNING

1. Switch off before installation or maintenance.
2. Switch on only after complete installation and examination of the circuit.
3. Professional electrician for installation and maintenance only.
4. This luminaire is not intended for use in high-risk task area lighting.



Read instructions and check you have all the tools and accessories to complete the installation correctly.

Installation

FIG.1



Cutout:

D55 cover: 42-50mm

D80 cover: 66-70mm

D140 cover: 85-105mm

FIG.2



NOTE: Go directly to the next step if no need D80 cover.

FIG.3

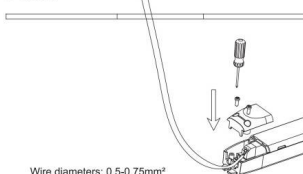


FIG.5

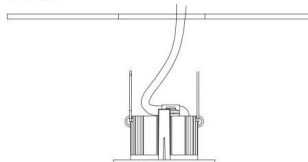


FIG.4

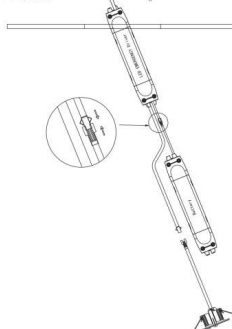
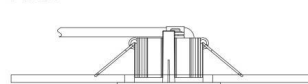


FIG.6



Change Lens (Optional)



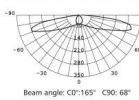
EMERGENCY / EMERGENCY
DOWNLIGHT / E-DOWNLIGHT / E-
DOWNLIGHT ACCESORIES

Item code 86.E003.0001.01



Photometric Data

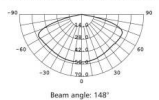
Oval lens for pathway application



Mounting height	Spacing distance
2.5m	18m
3.0m	20m
3.5m	22m

Compliant EUROPE standard EN1838
Illuminance requirement:
Escape route up to 2m wide, 1lx on
central axis and 0.5lx at 50% of the width.

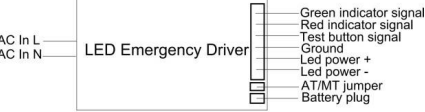
Round lens for open area application



Mounting height	Spacing distance
2.5m	9m
3.0m	10m
3.5m	11m

Compliant EUROPE standard EN1838
Illuminance requirement:
Escape route up to 2m wide, 1lx on
central axis and 0.5lx at 50% of the width.

Wiring diagram



Instructions for automatic test option

1. Instruction for Automatic test function

Once the unit is powered up, a self-diagnostics test will be automatically initiated:

- Check battery, lamp, charge board and transfer fault all the time.
- Run 3mins duration test every month.
- Run 1H or 3H duration test every year.

Note: All test functions are preset and no need field adjustment.

•	One flash, 4s pause	Battery disconnected
••	Two flashes, 4s pause	Low battery voltage
•••	Three flashes, 4s pause	Charge board fault
••••	Four flashes, 4s pause	AC/DC transfer fault
•••••	Five flashes, 4s pause	LED lamp fault

Note: When the fault is recovered, press the test button for 2s, the red flashing indicator will turn green. The fault is cleared, and the unit is back to normal.

3. Button Test

Press test button once	run a 30s duration test
Press test button twice within 2s	run a 3mins duration test
Press test button 3 times within 2s	run a 30mins duration test
Press test button 4 times within 2s	run a 1H or 3H duration test

2. Dual Colour LED Status Indicator Meaning

- Green indicator solid on: Ready/ Normal Operation
- Red indicator flashes: Require service

LED EMERGENCY LIGHT

IP20 CB CE   

